

ROTHERHAM BOROUGH COUNCIL – REPORT TO MEMBERS

1.	Meeting:	Cabinet
2.	Date:	24 April 2013
3.	Title:	Local Development Scheme
4.	Directorate:	Environment & Development Services

5. Summary

The report outlines an update to the Local Development Scheme to reflect the revised timetable for submission of the Core Strategy to government.

6. Recommendations

1. That Cabinet approve the revised and updated Local Development Scheme.

7. Proposals and Details

It is a requirement of the Planning and Compulsory Purchase Act 2004 (as amended by the Planning Act 2008 and Localism Act 2011) that the local planning authority must prepare and maintain a local development scheme.

The Local Development Scheme (LDS) sets out an updated and revised project plan for the preparation of the Development Plan Documents (DPDs) that will comprise the Rotherham Local Plan. The LDS is intended to:

- set out the subject matter, geographic coverage, development plan status and inter-relationships of Local Plan documents and if any are to be prepared jointly with other local planning authorities
- establish and reflect priorities for the Local Plan to steer associated work programming and resource allocation
- give a timetable and set milestones for the preparation and review of documents

The LDS was last formally revised in May 2012 (Cabinet 23/5/12, minute C4). This latest update reflects the revised timetable for submission of the Core Strategy to government, taking account of the revocation of the Yorkshire and Humber Regional Spatial Strategy (Cabinet 5/12/12, minute C104).

At future examinations of the Council's DPDs, one of the legal compliance checks that the planning inspector will carry out is that the DPD has been produced in conformity with the LDS. It is therefore important to ensure a revised and up to date LDS is in place in time for submission of the Core Strategy programmed for later in 2013.

The revised Local Development Scheme is attached at Appendix 1.

8. Finance

There are no direct financial implications arising from this report.

9. Risks and Uncertainties

Endorsement by Members of the Local Development Scheme is sought to enable progress towards adoption of programmed DPDs.

- The Localism Act and National Planning Policy Framework (NPPF) express a strong presumption in favour of sustainable development. Our UDP policies only continue to have any weight where they are in accordance with the NPPF. It is important that Rotherham's Core Strategy is in place as soon as possible to provide an up-to-date planning policy framework for the Borough's future growth and development.
- A failure to achieve timely progress on the Local Plan could delay the spatial strategy required to guide future decision-making on planning applications.

- Having a Local Plan in place will provide a steer for any neighbourhood plans that may emerge under the provisions of the Localism Act.
- Failure to make progress with the Local Plan risks delayed provision of the new homes and employment opportunities that the Borough needs.

10. Policy and Performance Agenda Implications

The implementation of the Local Plan will make a positive contribution to all of Rotherham's Regeneration priorities. When adopted, the Core Strategy and supporting documents will further the objectives of the Corporate Plan and support the delivery of the Rotherham Sustainable Community Strategy by:

- providing sufficient good quality homes
- ensuring well designed, decent affordable housing
- providing employment land to meet the needs of the modern economy and support sustainable communities through access to employment opportunities
- promoting the "town centre first" policy approach to help the regeneration and renaissance of Rotherham Town Centre

11. Background Papers and Consultation

Appendix 1: Local Development Scheme revised April 2013

Contact name:

Andy Duncan, Planning Policy Manager
01709 823830, andy.duncan@rotherham.gov.uk

Appendix 1: Local Development Scheme revised April 2013

ROTHERHAM LOCAL PLAN

LOCAL DEVELOPMENT SCHEME

Revised April 2013

CONTENTS

- 1. Introduction**
 - Background
 - Purpose of the Local Development Scheme
- 2. Local Plan programme**
 - Timetable
 - DPD profiles
- 3. Monitoring and review**
 - Annual Monitoring Report

Maps

Map 1: Rotherham DPD geographic coverage

Map 2: Barnsley, Doncaster and Rotherham Joint Waste Core Strategy DPD geographic coverage

1. Introduction

Background

Rotherham's current development plan is the Unitary Development Plan (UDP), comprising a Written Statement, Proposals Map and Supplementary Planning Guidance. The UDP was adopted in June 1999. The majority of the policies within the UDP were subsequently “saved” under the terms of the Planning and Compulsory Purchase Act 2004 by a direction from the Secretary of State (17/9/07).

The regional strategy, the Yorkshire and Humber Plan (2008), was formally revoked by the Secretary of State on 22 February 2013. The regional strategy is therefore no longer part of the development plan for Rotherham.

The requirements for the Local Plan to replace the UDP are set out in the Planning and Compulsory Purchase Act 2004 (as amended by the Localism Act 2011) and the National Planning Policy Framework (NPPF). The Local Plan consists of a portfolio of Development Plan Documents (DPDs) together with documents concerned with the management of the plan making process.

Rotherham Local Plan documents produced to date include:

- the Local Development Scheme (and subsequent revisions)
- the Statement of Community Involvement
- Annual Monitoring Reports
- the Barnsley, Doncaster and Rotherham Joint Waste Core Strategy (DPD)

The Statement of Community Involvement was formally adopted by the Council on 14 June 2006. The Barnsley, Doncaster and Rotherham Joint Waste Core Strategy was formally adopted on 8 March 2012. As such, the timetable for the Joint Waste Core Strategy is no longer included in the LDS.

Purpose of the Local Development Scheme

This document sets out an updated and revised project plan for the preparation of the DPDs that will comprise the Rotherham Local Plan. The LDS is intended to:

- set out the subject matter, geographic coverage, development plan status and inter-relationships of Local Plan documents and if any are to be prepared jointly with other local planning authorities
- establish and reflect priorities for the Local Plan to steer associated work programming and resource allocation
- give a timetable and set milestones for the preparation and review of documents

2. Local Plan programme

Timetable

The Rotherham Local Plan programme is focused on the following development plan documents (DPDs):

- Core Strategy DPD
- Sites & Policies DPD and Policies Map

The programme is illustrated in the timetable overleaf and expanded in the subsequent detailed profiles for each DPD included within this section.

An up-to-date timetable will be maintained on the Council's website under the Local Development Scheme page accessible via:

<http://www.rotherham.gov.uk/localplan>

Rotherham Local Plan Timetable - Revised April 2013

	2013												2014												2015											
	J	F	M	A	M	J	J	A	S	O	N	D	J	F	M	A	M	J	J	A	S	O	N	D	J	F	M	A	M	J	J	A	S	O	N	D
Core Strategy DPD	FC				S		M		E		R		A																							
Sites and Policies DPD & Policies Map						C												PSV																		

Production & Consultation	P	Preparation starts by consulting statutory bodies on the scope of Sustainability Appraisal
	C	Consultation on options/continuous engagement
Publication	PSV	Publication of proposed submission version
	FC	Consultation on focused changes
Examination	S	Submission to Secretary of State, examination period starts
	M	Pre-examination meeting (if required)
	E	Examination hearings
	R	Inspector's report
Adoption	A	Adoption

DPD profiles

Core Strategy DPD	
Document details	
Role and content	Sets out the vision, objectives and strategic policies for the future spatial development of the Borough, including targets for new housing and employment land
Status	DPD
Chain of conformity	To conform with national planning policy
Geographic coverage	Rotherham Metropolitan Borough
Timetable and milestones	
Commencement and pre-production	June 2005 – Feb 2006
Consultation with statutory bodies on the scope of the Sustainability Appraisal	Feb – June 2006
Public consultation on Issues and Options	May – June 2006
Public consultation on Preferred Options and Sustainability Appraisal	Feb – Mar 2007
Public consultation on Revised Options and Sustainability Appraisal	May – Aug 2009
Public consultation on Draft Core Strategy and Sustainability Appraisal	July – Sept 2011
Publication of Core Strategy for "soundness" representations and Sustainability Appraisal	July – Aug 2012
Public consultation on Core Strategy Focused Changes	Jan – Feb 2013
Submission of Core Strategy and Sustainability Appraisal	May 2013
Examination in Public	Sept 2013
Receipt of Inspector's report	Dec 2013
Adoption of the DPD	Feb 2014
Arrangements for production	
Lead responsibility	Planning Policy Team, Rotherham MBC
Management arrangements	Production stages guided by Member Steering Group recommending endorsement by Cabinet and approval by Full Council
Resources required	Produced internally with consultant input in relation to certain evidence base studies
Approach to involving the community and stakeholders	Outlined in the SCI with emphasis on front loading and fully reflecting the aims and programmes of community strategy and other principal stakeholders
Post production	
Monitoring and review mechanisms	Via the Annual Monitoring Report

Sites & Policies DPD and Policies Map	
Document details	
Role and content	Identifies sites proposed for development to deliver the Core Strategy together with policies for the managed release of land
Status	DPD
Chain of conformity	To conform with national planning policy and the Core Strategy
Geographic coverage	Rotherham Metropolitan Borough
Timetable and milestones	
Commencement and pre-production	Jan 2007
Call for Sites	Jan 2007 – Nov 2008
Release of Sites as part of the evidence base to support public consultation on Core Strategy Revised Options and Sustainability Appraisal	May – Aug 2009
Public consultation on Issues and Options	July – Sept 2011
Consultation with statutory bodies on the scope of the Sustainability Appraisal	June – Sept 2012
Public consultation on Draft Sites & Policies DPD and Policies Map and Sustainability Appraisal	May – July 2013
Publication of Sites & Policies DPD and Policies Map for "soundness" representations and Sustainability Appraisal	June – July 2014
Submission of Sites & Policies DPD and Policies Map and Sustainability Appraisal	Oct 2014
Examination in Public	Feb 2015
Receipt of Inspector's report	May 2015
Adoption of the DPD	July 2015
Arrangements for production	
Lead responsibility	Planning Policy Team, Rotherham MBC
Management arrangements	Production stages guided by Member Steering Group recommending endorsement by Cabinet and approval by Full Council
Resources required	Produced internally with consultant input in relation to certain evidence base studies
Approach to involving the community and stakeholders	Outlined in the SCI with emphasis on front loading and fully reflecting the aims and programmes of community strategy and other principal stakeholders
Post production	
Monitoring and review mechanisms	Via the Annual Monitoring Report

3. Monitoring and review

Annual Monitoring Report

Continuous monitoring and review are essential to the plan, monitor and manage process in the successful delivery of the spatial vision and objectives of the Local Plan. The Annual Monitoring Report (AMR) has an important dual role in tracking progress in the preparation of DPDs as well as monitoring outputs and trends, contributing to a broader evidence base against which policies and their implementation can be evaluated.

The AMR will be published at the end of each calendar year, reporting progress made in the preceding financial year. The AMR will:

- specify how the Council is performing within the timescales for DPD preparation set out in the LDS
- inform the rolling forward of the Local Plan programme in the LDS
- provide an update of the extent of the remaining parts of the UDP.

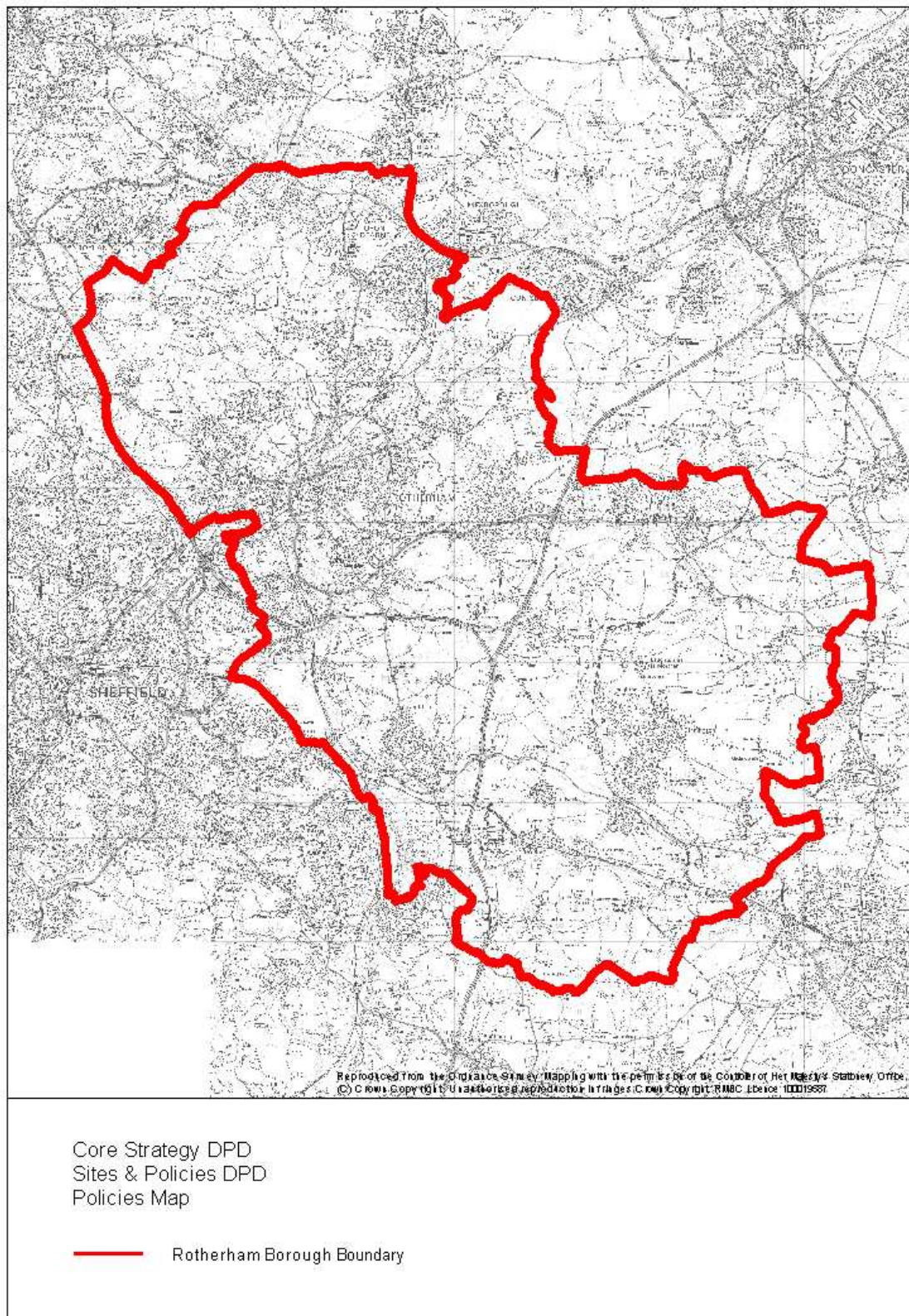
As well as assessing the Council's progress in implementing the Local Development Scheme the AMR will also:

- provide details of how well policies are being achieved by tracking the impact of policies on relevant targets and whether policies need adjustment in the light of changes to national policy. In particular, the AMR will include trajectories of forecast future housing supply against strategic housing requirements.
- Provide an updated list of technical studies, reports and other relevant publications contributing to the evidence base supporting Local Plan preparation.
- Indicate the performance of infrastructure providers against the infrastructure delivery planning requirements set out in the Core Strategy.

Annual Monitoring Reports will be published on the Council's website under the Annual Monitoring Report page accessible via:

<http://www.rotherham.gov.uk/localplan>

Map 1: Rotherham DPD geographic coverage



**Map 2: Barnsley, Doncaster and Rotherham Joint Waste Core Strategy DPD
geographic coverage**

